

CENTRAL CONTROL AND PAYMENT SYSTEM

PT-CP200, PT-PS200 & PT-CDE200

PT-CP200, PT-PS200 and PT-CDE200 are the suite of applications and hardware that constitutes the Central Control and Payment Station (CCPS) for the parking solution. CCPS can be complemented with optional hardware such as cash drawer, desktop laser barcode reader, desktop VFD fee display and ticket replacement issuer machine.

CCPS provides parking operator and building management the tool to control, manage and monitor the collection aspects of parking. This includes a flexible user define rate traffic or parking scheme structure and viewing and printing of operational and information reports. Our modules are scalable to meet the most basic and up to the more complex fee structure and logic. This provides the choice for parking operator to invest cost effectively. Optional season parking module is also available for operator selection.

The reports can be selected based on tickets, season passes or revenue. For the ticket it shall include the daily collection, daily weekly and monthly summary of collection, daily and monthly ticket quantity and daily, monthly ticket override and others. On the season parking, report will contain all programmed season passes, active and inactive, assign and unassigned card and collections. In revenue, user will be able to get the monthly revenue summary.

Key Features

- Simple and User Friendly Operation
- Flexibility and Scalability to cater for 1 to multiple parking sites.
- Monitor and control of all devices throughout the parking facility
- Easy setup of parking rate package and block rates within a pre-defined
- Multiple endorsement rates packages can be defined
- Intelligent and flexible calculation (automatic) for maximum/minimum rate
- Integration capability to license plate recognition systems (LPRS) and parking guidance systems (PGS).
- Manual overriding process for payments/tickets
- Extensive reports availability
- Supports Autopay PT-AS2000
- Supports Malaysia GST implementation.

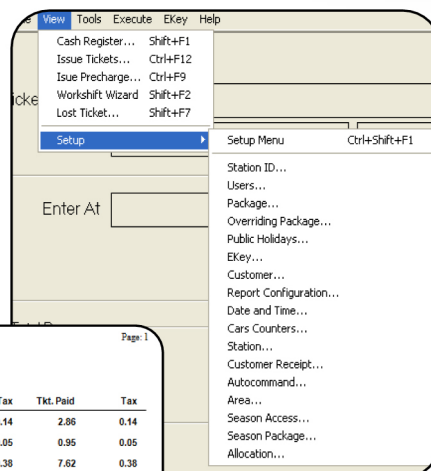


24th December 2015, Time 11.15am

Daily Collection Detail

#2008 06 23

Booth ID	Receipt#	Rcpt. Date	Cashier	Ticket#	Payment	Tax	Tkt. Paid	Tax
CP1	CP1.00000444.93	2008-06-23 10.5	103 Siva	TD1.00220671.55	2.86	0.14	2.86	0.14
CP1	CP1.00000445.57	2008-06-23 11.2	103 Siva	TD1.00220760.36	0.95	0.05	0.95	0.05
AP1	AP1.00037308.41	2008-06-23 20.4	s000 **System Auto	TD1.00220757.37	7.62	0.38	7.62	0.38
AP1	AP1.00037309.58	2008-06-23 21.4	s000 **System Auto	TD2.00221699.48	2.86	0.14	0.38	0.14
AP1	AP1.00037310.36	2008-06-23 21.4	s000 **System Auto	TD1.00221674.39	2.86	0.14	0.38	0.14
AP2	AP2.00056450.15	2008-06-23 21.0	s000 **System Auto	TD3.00148852.83	0.95	0.05	0.95	0.05
AP2	AP2.00056451.11	2008-06-23 21.1	s000 **System Auto	TD1.00221688.56	2.86	0.14	0.38	0.14
AP2	AP2.00056452.19	2008-06-23 21.1	s000 **System Auto	TD2.00221789.78	2.86	0.14	0.38	0.14
Total					23.82	1.18	23.82	1.18
Grand Total					23.82	1.18	23.82	1.18



PRO-TECH

Technical Specifications

Item	Description
Model	PT-CDE200
Chassis	Metal steel powder coated
Dimension	69cm (W) x 21cm (D) x 54cm (H)
Input Voltage	230V±10%
Temperature	+5° C to +50° C for indoor installation
Model	PT-CP/PS 200
Software Feature	<ol style="list-style-type: none">1. Configuration of devices with the parking solution.2. User Setup3. Setup and Maintenance of ticketing rate packages4. Define public holiday & Pre-schedule rate tariff5. Configuration of GST rates6. Setup of new season card7. Season card maintenance & listing8. Season collection at office9. Ticketing report summary / detail10. Collection Report summary / detail11. Season Report summary / detail12. System & Activities Audit Report13. Car Flow Analysis & Etc
Optional	<ol style="list-style-type: none">1. Programmable Keyboard2. Cash Drawer3. Desktop Laser Barcode Reader4. Desktop VFD Fee Display5. Ticket Replacement Issuer Machine.

For further information, please contact:

